

Narrative Of A Gentleman Bundle

ARTKIT-K1007-00648

Copyright © 2021, Janet Carr

All rights reserved

Papers

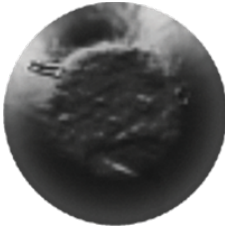




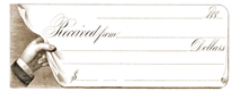
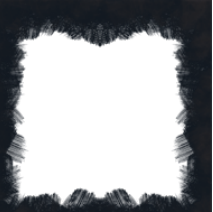
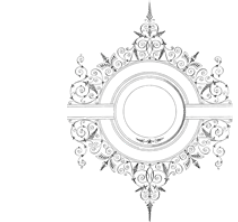
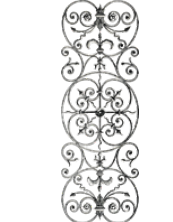
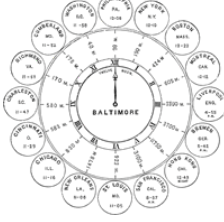
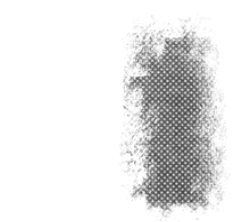
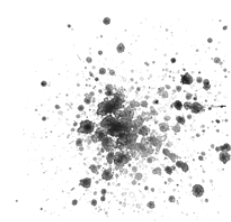
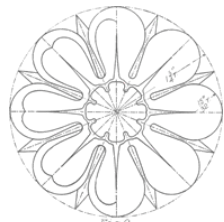
Embellishments

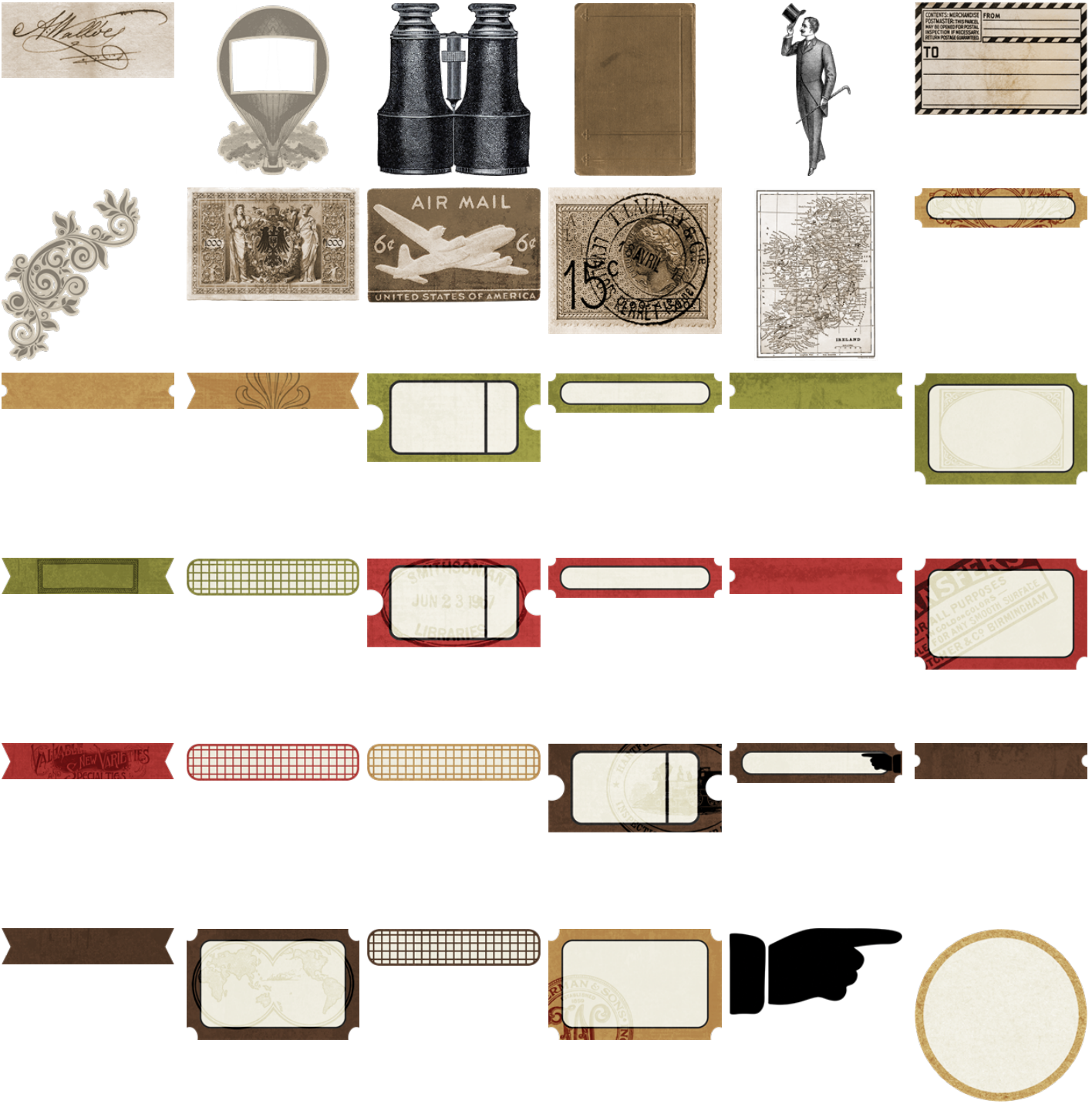






...an imaginary unit; one of the most common in literature is the "dash" or "hyphen" which is used to connect two words or to divide a word into syllables. The dash is also used to indicate a break in a line of text or to separate a list of items. The hyphen is used to connect two words or to divide a word into syllables. The dash is also used to indicate a break in a line of text or to separate a list of items.





AlphaSets

